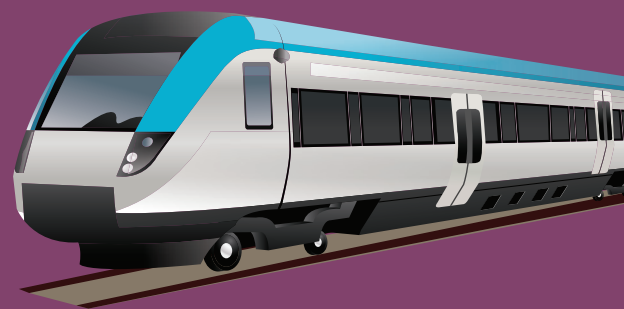


# KATHMANDU-POKHARA RAILWAY PROJECT



Lead Government Agency	Office of the Investment Board; and Department of Railways of Ministry of Physical Infrastructure and Transport
Geographical Location (Districts)	6 Districts (Kathmandu, Dhading, Gorkha, Tanahaun, Nuwakot, Pokhara)

## PROJECT DETAILS

Project Cost (In USD)	Pokhara to Kathmandu: 2830 Million Tamsariya - Bharatpur - Abukhaireni: 527 Million
Progress	Feasibility Study
Project Land Required (in Ha.)	151 ha of forest (Pokhara - Kathmandu) 187 ha of forest (Tamsaria- Abukhaireni)
Project Documents Available	Feasibility Study Report
Form of Investment (PPP/Private Investment)	Public Private Partnership
Expected Fiscal Benefits to GoN	<ul style="list-style-type: none"><li>■ Establishment of physical infrastructures</li><li>■ Creation of employment opportunities</li><li>■ Better connectivity</li><li>■ Development of industrial competitiveness</li><li>■ Reduction of traffic congestion</li><li>■ Improvement of road safety</li><li>■ Reduction of pollution</li></ul>

# PROJECT DESCRIPTION AND RELEVANCE/ OBJECTIVES

Currently, it takes around five to six hours to travel from Kathmandu to Pokhara. According to the Department of Railways, upon completion

of the railway, the regular travel time will shrink to two hours while the journey will be safe and environment-friendly.

## RELEVANCE TO THE OVERALL ECONOMY

Implementation of this project is expected to facilitate public transport, as well as generate

employment and contribute notably to the national economy through growth of economic activities.

## SALIENT FEATURES OF THE PROJECT

### **Pokhara to Kathmandu**

- Length : 187.083 km
- No of Bridges : 42
- Longest Bridge : 1295 m (Madi Nadi)
- No of Tunnels :44 (107.277 km)
- Longest Tunnel : 14.525 km

### **Tamsariya - Bharatpur - Abukhaireni (link between Pokhara-Kathmandu and East-West Railway)**

- Length : 71.729 km
- No of Bridges : 9
- Longest Bridge : 1250 m (Kaligandaki)
- No of Tunnels : 2 (20.416 km)
- Longest Tunnel : 11.7 km